

Executive Summary of the Third Report of the National Cholesterol Education Program (NCEP) Expert Panel on Detection, Evaluation, and Treatment of High Blood Cholesterol in Adults (Adult Treatment Panel III)

Expert Panel on Detection, Evaluation, and Treatment of High Blood Cholesterol in Adults

THE THIRD REPORT OF THE Expert Panel on Detection, Evaluation, and Treatment of High Blood Cholesterol in Adults (Adult Treatment Panel III, or ATP III) constitutes the National Cholesterol Education Program's (NCEP's) updated clinical guidelines for cholesterol testing and management. The full ATP III document is an evidence-based and extensively referenced report that provides the scientific rationale for the recommendations contained in the executive summary. ATP III builds on previous ATP reports and expands the indications for intensive cholesterol-lowering therapy in clinical practice. It should be noted that these guidelines are intended to inform, not replace, the physician's clinical judgment, which must ultimately determine the appropriate treatment for each individual.

BACKGROUND

The third ATP report updates the existing recommendations for clinical management of high blood cholesterol. The NCEP periodically produces ATP clinical updates as warranted by advances in the science of cholesterol management. Each of the guideline reports—ATP I, II, and III—

See also p 2508 and Patient Page.

has a major thrust. ATP I outlined a strategy for primary prevention of coronary heart disease (CHD) in persons with high levels of low-density lipoprotein (LDL) cholesterol (≥ 160 mg/dL) or those with borderline high LDL cholesterol (130-159 mg/dL) and multiple (2+) risk factors. ATP II affirmed the importance of this approach and added a new feature: the intensive management of LDL cholesterol in persons with established CHD. For patients with CHD, ATP II set a new, lower LDL cholesterol goal of ≤ 100 mg/dL. ATP III adds a call for more intensive LDL-lowering therapy in certain groups of people, in accord with recent clinical trial evidence, but its core is based on ATP I and ATP II. Some of the important features shared with previous reports are shown in Table A in the APPENDIX.

While ATP III maintains attention to intensive treatment of patients with CHD, its major new feature is a focus on primary prevention in persons with multiple risk factors. Many of these persons have a relatively high risk for CHD and will benefit from more intensive LDL-lowering treatment than recommended in ATP II. TABLE 1 shows the new features of ATP III. (Note: To convert cholesterol to mmol/L, divide values by 38.7).

LDL CHOLESTEROL: THE PRIMARY TARGET OF THERAPY

Research from experimental animals, laboratory investigations, epidemiol-

ogy, and genetic forms of hypercholesterolemia indicate that elevated LDL cholesterol is a major cause of CHD. In addition, recent clinical trials robustly show that LDL-lowering therapy reduces risk for CHD. For these reasons, ATP III continues to identify elevated LDL cholesterol as the primary target of cholesterol-lowering therapy. As a result, the primary goals of therapy and the cutpoints for initiating treatment are stated in terms of LDL.

RISK ASSESSMENT: FIRST STEP IN RISK MANAGEMENT

A basic principle of prevention is that the intensity of risk-reduction therapy should be adjusted to a person's absolute risk. Hence, the first step in selection of LDL-lowering therapy is to assess a person's risk status. Risk assessment requires measurement of LDL cholesterol as part of lipoprotein analysis and identification of accompanying risk determinants.

In all adults aged 20 years or older, a fasting lipoprotein profile (total cholesterol, LDL cholesterol, high-density lipoprotein [HDL] cholesterol, and triglyceride) should be obtained once every 5 years. If the testing opportunity is non-fasting, only the values for total chole-

Corresponding Author and Reprints: James I. Cleeman, MD, National Cholesterol Education Program, National Heart, Lung, and Blood Institute (NHLBI), 31 Center Dr, Room 4A16, MSC 2480, Bethesda, MD 20892-2480 (e-mail: cleemanj@nih.gov). **The Full Report of ATP III** is available online on the NHLBI Web site at www.nhlbi.nih.gov. **Members of the NCEP Expert Panel** are listed at the end of this article.

terol and HDL cholesterol will be usable. In such a case, if total cholesterol is ≥ 200 mg/dL or HDL is < 40 mg/dL, a follow-up lipoprotein profile is needed for appropriate management based on LDL. The relationship between LDL cholesterol levels and CHD risk is continuous over a broad range of LDL levels from low to high. Therefore, ATP III adopts the classification of LDL cholesterol levels shown in TABLE 2, which also shows the classification of total and HDL cholesterol levels.

Risk determinants in addition to LDL cholesterol include the presence or absence of CHD, other clinical forms of atherosclerotic disease, and the major risk factors other than LDL (TABLE 3). (LDL is not counted among the risk factors in Table 3 because the purpose of counting those risk factors is to modify the treatment of LDL.) Based on these other risk determinants, ATP III identifies 3 categories of risk that modify the goals and modalities of LDL-lowering therapy. TABLE 4 defines these categories of risk and shows corresponding LDL cholesterol goals.

The category of highest risk consists of CHD and CHD risk equivalents. The latter carry a risk for major coronary events equal to that of established CHD, ie, $> 20\%$ per 10 years (ie, more than 20 of 100 such individuals will develop CHD or have a recurrent CHD event within 10 years). CHD risk equivalents comprise:

- Other clinical forms of atherosclerotic disease (peripheral arterial disease, abdominal aortic aneurysm, and symptomatic carotid artery disease)
- Diabetes
- Multiple risk factors that confer a 10-year risk for CHD $> 20\%$.

Diabetes counts as a CHD risk equivalent because it confers a high risk of new CHD within 10 years, in part because of its frequent association with multiple risk factors. Furthermore, because persons with diabetes who experience a myocardial infarction have an unusually high death rate either immediately or in the long term, a more intensive prevention strategy is war-

Table 1. New Features of ATP III*

Focus on Multiple Risk Factors	
•	Raises persons with diabetes without CHD, most of whom have multiple risk factors, to the risk level of CHD risk equivalent
•	Uses Framingham projections of 10-year absolute CHD risk (ie, the percent probability of having a CHD event in 10 years) to identify certain patients with multiple (2+) risk factors for more intensive treatment
•	Identifies persons with multiple metabolic risk factors (metabolic syndrome) as candidates for intensified therapeutic lifestyle changes
Modifications of Lipid and Lipoprotein Classification	
•	Identifies LDL cholesterol < 100 mg/dL as optimal
•	Raises categorical low HDL cholesterol from < 35 mg/dL to < 40 mg/dL because the latter is a better measure of a depressed HDL
•	Lowers the triglyceride classification cutpoints to give more attention to moderate elevations
Support for Implementation	
•	Recommends a complete lipoprotein profile (total, LDL, and HDL cholesterol and triglycerides) as the preferred initial test, rather than screening for total cholesterol and HDL alone
•	Encourages use of plant stanols/sterols and viscous (soluble) fiber as therapeutic dietary options to enhance lowering of LDL cholesterol
•	Presents strategies for promoting adherence to therapeutic lifestyle changes and drug therapies
•	Recommends treatment beyond LDL lowering for persons with triglycerides ≥ 200 mg/dL

*ATP indicates Adult Treatment Panel; CHD, coronary heart disease; LDL, low-density lipoprotein; and HDL, high-density lipoprotein.

Table 2. ATP III Classification of LDL, Total, and HDL Cholesterol (mg/dL)*

LDL cholesterol	
< 100	Optimal
100-129	Near or above optimal
130-159	Borderline high
160-189	High
≥ 190	Very high
Total cholesterol	
< 200	Desirable
200-239	Borderline high
≥ 240	High
HDL cholesterol	
< 40	Low
≥ 60	High

*ATP indicates Adult Treatment Panel; LDL, low-density lipoprotein; and HDL, high-density lipoprotein.

ranted. Persons with CHD or CHD risk equivalents have the lowest LDL cholesterol goal (< 100 mg/dL).

The second category consists of persons with multiple (2+) risk factors in whom 10-year risk for CHD is $\leq 20\%$. Risk is estimated from Framingham risk scores (see Appendix). The major risk factors, exclusive of elevated LDL cholesterol, are used to define the presence of multiple risk factors that modify the goals and cutpoints for LDL-lowering treatment, and these are listed in Table 3. The LDL cholesterol goal for persons with multiple (2+) risk factors is < 130 mg/dL.

The third category consists of persons having 0-1 risk factor; with few exceptions, persons in this category have a 10-year risk $< 10\%$. Their LDL cholesterol goal is < 160 mg/dL.

Table 3. Major Risk Factors (Exclusive of LDL Cholesterol) That Modify LDL Goals*

- Cigarette smoking
- Hypertension (blood pressure $\geq 140/90$ mm Hg or on antihypertensive medication)
- Low HDL cholesterol (< 40 mg/dL)[†]
- Family history of premature CHD (CHD in male first-degree relative < 55 years; CHD in female first-degree relative < 65 years)
- Age (men ≥ 45 years; women ≥ 55 years)

*Diabetes is regarded as a coronary heart disease (CHD) risk equivalent. LDL indicates low-density lipoprotein; HDL, high-density lipoprotein.

[†]HDL cholesterol ≥ 60 mg/dL counts as a "negative" risk factor; its presence removes 1 risk factor from the total count.

Table 4. Three Categories of Risk That Modify LDL Cholesterol Goals

Risk Category	LDL Goal (mg/dL)
CHD and CHD risk equivalents	< 100
Multiple (2+) risk factors*	< 130
0-1 risk factor	< 160

*Risk factors that modify the low-density lipoprotein (LDL) goal are listed in Table 3. CHD indicates coronary heart disease.

Method of Risk Assessment: Counting Major Risk Factors and Estimating 10-Year CHD Risk

Risk status in persons without clinically manifest CHD or other clinical forms of atherosclerotic disease is determined by a 2-step procedure. First, the number of risk factors is counted (Table 3). Second, for persons with multiple (2+) risk factors, 10-year risk assessment is carried out with Framingham scoring (see Appendix) to identify individuals whose short-term (10-

year) risk warrants consideration of intensive treatment. Estimation of the 10-year CHD risk adds a step to risk assessment beyond risk factor counting, but this step is warranted because it allows better targeting of intensive treatment to people who will benefit from it. When 0-1 risk factor is present, Framingham scoring is not necessary because 10-year risk rarely reaches levels for intensive intervention; a very high LDL level in such a person may nevertheless warrant consideration of drug therapy to reduce long-term risk. Risk factors used in Framingham scoring include age, total cholesterol, HDL cholesterol, blood pressure, and cigarette smoking. Total cholesterol is used for 10-year risk assessment because of a larger and more robust Framingham database for total than for LDL cholesterol, but LDL cholesterol is the primary target of therapy. Framingham scoring divides persons with multiple risk factors into those with 10-year risk for CHD of >20%, 10%-20%, and <10%. It should be noted that this 2-step sequence can be reversed with essentially the same results. (If Framingham scoring is carried out before risk factor counting, persons with <10% risk are then divided into those with 2+ risk factors and 0-1 risk factor by risk factor counting to determine the appropriate LDL goal [Table 4].) Initial risk assessment in ATP III uses the major risk factors to define the core risk status. Only after the core risk status has been determined should any other risk modifiers be taken into consideration for adjusting the therapeutic approach.

Role of Other Risk Factors in Risk Assessment

ATP III recognizes that risk for CHD is influenced by other factors not included among the major, independent risk factors (Table 3). Among these are life-habit risk factors and emerging risk factors. The former include obesity, physical inactivity, and atherogenic diet; the latter consist of lipoprotein(a), homocysteine, prothrombotic and proinflammatory factors, impaired fast-

ing glucose, and evidence of subclinical atherosclerotic disease. The life-habit risk factors are direct targets for clinical intervention but are not used to set a lower LDL cholesterol goal of therapy. The emerging risk factors do not categorically modify LDL cholesterol goals; however, they appear to contribute to CHD risk to varying degrees and can have utility in selected persons to guide intensity of risk-reduction therapy. Their presence can modulate clinical judgment when making therapeutic decisions.

Metabolic Syndrome

Many persons have a constellation of major risk factors, life-habit risk factors, and emerging risk factors that constitute a condition called the metabolic syndrome. Factors characteristic of the metabolic syndrome are abdominal obesity, atherogenic dyslipidemia (elevated triglyceride, small LDL particles, low HDL cholesterol), raised blood pressure, insulin resistance (with or without glucose intolerance), and prothrombotic and proinflammatory states. ATP III recognizes the metabolic syndrome as a secondary target of risk-reduction therapy, after the primary target—LDL cholesterol. Diagnosis and treatment of the metabolic syndrome is described below under “Benefit Beyond LDL Lowering: The Metabolic Syndrome as a Secondary Target of Therapy.”

The Link Between Risk Assessment and Cost-effectiveness

In ATP III, a primary aim is to match intensity of LDL-lowering therapy with absolute risk. Everyone with elevated LDL cholesterol is treated with lifestyle changes that are effective in lowering LDL levels. Persons at relatively high risk are also candidates for drug treatment, which is very effective but entails significant additional expense. The cutpoints for drug treatment are based primarily on risk-benefit considerations: those at higher risk are likely to get greater benefit. However, cutpoints for recommended management based on therapeutic effi-

cacy are checked against currently accepted standards for cost-effectiveness. Lifestyle changes are the most cost-effective means to reduce risk for CHD. Even so, to achieve maximal benefit, many persons will require LDL-lowering drugs. Drug therapy is the major expense of LDL-lowering therapy and it dominates cost-effectiveness analysis. However, the costs of LDL-lowering drugs are currently in flux and appear to be declining. This report recognizes that as drug prices decline it will be possible to extend drug use to lower-risk persons and still be cost-effective. In addition, ATP III recognizes that some persons with high long-term risk are candidates for LDL-lowering drugs even though use of drugs may not be cost-effective by current standards.

PRIMARY PREVENTION WITH LDL-LOWERING THERAPY

Primary prevention of CHD offers the greatest opportunity for reducing the burden of CHD in the United States. The clinical approach to primary prevention is founded on the public health approach that calls for lifestyle changes, including (1) reduced intakes of saturated fat and cholesterol, (2) increased physical activity, and (3) weight control, to lower population cholesterol levels and reduce CHD risk, but the clinical approach intensifies preventive strategies for higher-risk persons. One aim of primary prevention is to reduce long-term risk (>10 years) as well as short-term risk (≤10 years). LDL goals in primary prevention depend on a person's absolute risk for CHD (ie, the probability of having a CHD event in the short term or the long term)—the higher the risk, the lower the goal. Therapeutic lifestyle changes are the foundation of clinical primary prevention. Nonetheless, some persons at higher risk because of high or very high LDL cholesterol levels or because of multiple risk factors are candidates for LDL-lowering drugs. Recent primary prevention trials show that LDL-lowering drugs reduce risk for major

coronary events and coronary death even in the short term.

Any person with elevated LDL cholesterol or other form of hyperlipidemia should undergo clinical or laboratory assessment to rule out secondary dyslipidemia before initiation of lipid-lowering therapy. Causes of secondary dyslipidemia include:

- Diabetes
- Hypothyroidism
- Obstructive liver disease
- Chronic renal failure
- Drugs that increase LDL cholesterol and decrease HDL cholesterol (progestins, anabolic steroids, and corticosteroids).

Once secondary causes have been excluded or, if appropriate, treated, the goals for LDL-lowering therapy in primary prevention are established according to a person's risk category (Table 4).

SECONDARY PREVENTION WITH LDL-LOWERING THERAPY

Recent clinical trials demonstrate that LDL-lowering therapy reduces total mortality, coronary mortality, major coronary events, coronary artery procedures, and stroke in persons with established CHD. As shown in Table 2, an LDL cholesterol level of <100 mg/dL is optimal; therefore, ATP III specifies an LDL cholesterol level of <100 mg/dL as the goal of therapy in secondary prevention. This goal is supported by clinical trials with both clinical and angiographic end points and by prospective epidemiological studies. The same goal should apply for persons with CHD risk equivalents. When persons are hospitalized for acute coronary syndromes or coronary procedures, lipid measures should be taken on admission or within 24 hours. These values can guide the physician on initiation of LDL-lowering therapy before or at discharge. Adjustment of therapy may be needed after 12 weeks.

LDL-LOWERING THERAPY IN 3 RISK CATEGORIES

The 2 major modalities of LDL-lowering therapy are therapeutic lifestyle changes (TLC) and drug therapy. Both are described in more detail later. The TLC Diet stresses reductions in saturated fat and cholesterol intakes. When the metabolic syndrome or its associated lipid risk factors (elevated triglyceride or low HDL cholesterol) are present, TLC also stresses weight reduction and increased physical activity. TABLE 5 defines LDL cholesterol goals and cutpoints for initiation of TLC and for drug consideration for persons with 3 categories of risk: CHD and CHD risk equivalents; multiple (2+) risk factors (10-year risk 10%-20% and <10%); and 0-1 risk factor.

CHD and CHD Risk Equivalents

For persons with CHD and CHD risk equivalents, LDL-lowering therapy greatly reduces risk for major coronary events and stroke and yields highly favorable cost-effectiveness ratios. The cutpoints for initiating lifestyle and drug therapies are shown in Table 5.

If baseline LDL cholesterol is ≥ 130 mg/dL, intensive lifestyle therapy and maximal control of other risk factors should be started. Moreover, for most patients, an LDL-lowering drug will be required to achieve an LDL cholesterol level of <100 mg/dL; thus an LDL-cholesterol lowering drug can be started simultaneously with TLC to attain the goal of therapy.

If LDL cholesterol levels are 100-129 mg/dL, either at baseline or on LDL-lowering therapy, several therapeutic approaches are available:

- Initiate or intensify lifestyle and/or drug therapies specifically to lower LDL.
- Emphasize weight reduction and increased physical activity in persons with the metabolic syndrome.
- Delay use or intensification of LDL-lowering therapies and institute treatment of other lipid or nonlipid risk factors; consider use of other lipid-modifying drugs (eg, nicotinic acid or fibric acid) if the patient has elevated triglyceride or low HDL cholesterol.

If baseline LDL cholesterol is <100 mg/dL, further LDL-lowering therapy is not required. Patients should nonetheless be advised to follow the TLC Diet on their own to help keep the LDL level optimal. Several clinical trials are currently under way to assess benefit of lowering LDL cholesterol to well below 100 mg/dL. At present, emphasis should be placed on controlling other lipid and nonlipid risk factors and on treatment of the metabolic syndrome, if present.

Multiple (2+) Risk Factors and 10-Year Risk of $\leq 20\%$

For persons with multiple (2+) risk factors and 10-year risk $\leq 20\%$, intensity of therapy is adjusted according to 10-year risk and LDL cholesterol level. The treatment approach for each category is summarized in Table 5.

Multiple (2+) Risk Factors and a 10-Year Risk of 10%-20%. In this category, the goal for LDL cholesterol is <130 mg/dL. The therapeutic aim is to reduce short-term risk as well as long-term risk for CHD. If baseline LDL cholesterol is ≥ 130 mg/dL, TLC is initiated and maintained for 3 months. If LDL remains ≥ 130 mg/dL after 3 months of TLC, consideration can be given to starting an LDL-lowering drug to achieve the LDL goal of <130 mg/dL. Use of LDL-lowering drugs at this risk level reduces CHD risk and is cost-effective. If the LDL falls to less than 130 mg/dL on TLC alone, TLC can be continued without adding drugs. In older persons (≥ 65 years), clinical judgment is required for how intensively to apply these guidelines; a variety of factors, including concomitant illnesses, general health status, and social issues, may influence treatment decisions and may suggest a more conservative approach.

Multiple (2+) Risk Factors and a 10-Year Risk of <10%. In this category, the goal for LDL cholesterol also is <130 mg/dL. The therapeutic aim, however, is primarily to reduce longer-term risk. If baseline LDL cholesterol is ≥ 130 mg/dL, the TLC Diet is initiated to reduce LDL cholesterol. If LDL

Table 5. LDL Cholesterol Goals and Cutpoints for Therapeutic Lifestyle Changes (TLC) and Drug Therapy in Different Risk Categories*

Risk Category	LDL Goal (mg/dL)	LDL Level at Which to Initiate Therapeutic Lifestyle Changes (mg/dL)	LDL Level at Which to Consider Drug Therapy (mg/dL)
CHD or CHD risk equivalents (10-year risk >20%)	<100	≥100	≥130 (100-129: drug optional)†
2+ Risk factors (10-year risk ≤20%)	<130	≥130	10-year risk 10%-20%: ≥130 10-year risk <10%: ≥160
0-1 Risk factor‡	<160	≥160	≥190 (160-189: LDL-lowering drug optional)

*LDL indicates low-density lipoprotein; CHD, coronary heart disease.

†Some authorities recommend use of LDL-lowering drugs in this category if an LDL cholesterol level of <100 mg/dL cannot be achieved by therapeutic lifestyle changes. Others prefer use of drugs that primarily modify triglycerides and HDL, eg, nicotinic acid or fibrate. Clinical judgment also may call for deferring drug therapy in this subcategory.

‡Almost all people with 0-1 risk factor have a 10-year risk <10%; thus, 10-year risk assessment in people with 0-1 risk factor is not necessary.

Table 6. Nutrient Composition of the Therapeutic Lifestyle Changes (TLC) Diet

Nutrient	Recommended Intake
Saturated fat*	<7% of total calories
Polyunsaturated fat	Up to 10% of total calories
Monounsaturated fat	Up to 20% of total calories
Total fat	25%-35% of total calories
Carbohydrate†	50%-60% of total calories
Fiber	20-30 g/d
Protein	Approximately 15% of total calories
Cholesterol	<200 mg/d
Total calories‡	Balance energy intake and expenditure to maintain desirable body weight/prevent weight gain

**Trans* fatty acids are another LDL-raising fat that should be kept at a low intake.

†Carbohydrates should be derived predominantly from foods rich in complex carbohydrates including grains, especially whole grains, fruits, and vegetables.

‡Daily energy expenditure should include at least moderate physical activity (contributing approximately 200 kcal/d).

is <160 mg/dL on TLC alone, it should be continued. LDL-lowering drugs generally are not recommended because the patient is not at high short-term risk. On the other hand, if LDL cholesterol is ≥160 mg/dL, drug therapy can be considered to achieve an LDL cholesterol level of <130 mg/dL; the primary aim is to reduce long-term risk. Cost-effectiveness is marginal, but drug therapy can be justified to slow development of coronary atherosclerosis and to reduce long-term risk for CHD.

0-1 Risk Factor

Most persons with 0-1 risk factor have a 10-year risk <10%. They are managed according to Table 5. The goal for LDL cholesterol in this risk category is <160 mg/dL. The primary aim of therapy is to reduce long-term risk. First-line therapy is TLC. If after 3 months of TLC the LDL cholesterol is <160 mg/dL, TLC is continued. However, if LDL chole-

sterol is 160-189 mg/dL after an adequate trial of TLC, drug therapy is optional depending on clinical judgment. Factors favoring use of drugs include:

- A severe single risk factor (heavy cigarette smoking, poorly controlled hypertension, strong family history of premature CHD, or very low HDL cholesterol)
- Multiple life-habit risk factors and emerging risk factors (if measured)
- 10-year risk approaching 10% (if measured; see Appendix). If LDL cholesterol is ≥190 mg/dL despite TLC, drug therapy should be considered to achieve the LDL goal of <160 mg/dL.

The purpose of using LDL-lowering drugs in persons with 0-1 risk factor and elevated LDL cholesterol (≥160 mg/dL) is to slow the development of coronary atherosclerosis, which will reduce long-term risk. This aim may conflict with cost-effectiveness considerations; thus, clinical judgment is re-

quired in selection of persons for drug therapy, although a strong case can be made for using drugs when LDL cholesterol is ≥190 mg/dL after TLC.

For persons whose LDL cholesterol levels are already below goal levels upon first encounter, instructions for appropriate changes in life habits, periodic follow-up, and control of other risk factors are needed.

THERAPEUTIC LIFESTYLE CHANGES IN LDL-LOWERING THERAPY

ATP III recommends a multifaceted lifestyle approach to reduce risk for CHD. This approach is designated therapeutic lifestyle changes (TLC). Its essential features are:

- Reduced intakes of saturated fats (<7% of total calories) and cholesterol (<200 mg/d) (see TABLE 6 for overall composition of the TLC Diet)
- Therapeutic options for enhancing LDL lowering such as plant stanols/sterols (2 g/d) and increased viscous (soluble) fiber (10-25 g/d)
- Weight reduction
- Increased physical activity.

A model of steps in TLC is shown in FIGURE 1. To initiate TLC, intakes of saturated fats and cholesterol are reduced first to lower LDL cholesterol. To improve overall health, ATP III's TLC Diet generally contains the recommendations embodied in the Dietary Guidelines for Americans 2000. One exception is that total fat is allowed to range from 25%-35% of total calories provided saturated fats and *trans* fatty acids are kept low. A higher intake of total fat, mostly in the form of unsaturated fat, can help to reduce triglycerides and raise HDL cholesterol in persons with the metabolic syndrome. In accord with the Dietary Guidelines, moderate physical activity is encouraged. After 6 weeks, the LDL response is determined; if the LDL cholesterol goal has not been achieved, other therapeutic options for LDL lowering such as plant stanol/sterols and viscous fiber can be added.

After maximum reduction of LDL cholesterol with dietary therapy, emphasis shifts to management of the

metabolic syndrome and associated lipid risk factors. The majority of persons with these latter abnormalities are overweight or obese and sedentary. Weight reduction therapy for overweight or obese patients will enhance LDL lowering and will provide other health benefits including modifying other lipid and nonlipid risk factors. Assistance in the management of overweight and obese persons is provided by the *Clinical Guidelines on the Identification, Evaluation, and Treatment of Overweight and Obesity in Adults* from the NHLBI Obesity Education Initiative (1998). Additional risk reduction

can be achieved by simultaneously increasing physical activity.

At all stages of dietary therapy, physicians are encouraged to refer patients to registered dietitians or other qualified nutritionists for *medical nutrition therapy*, which is the term for the nutritional intervention and guidance provided by a nutrition professional.

DRUG THERAPY TO ACHIEVE LDL CHOLESTEROL GOALS

A portion of the population whose short-term or long-term risk for CHD is high will require LDL-lowering drugs in addition to TLC to reach the desig-

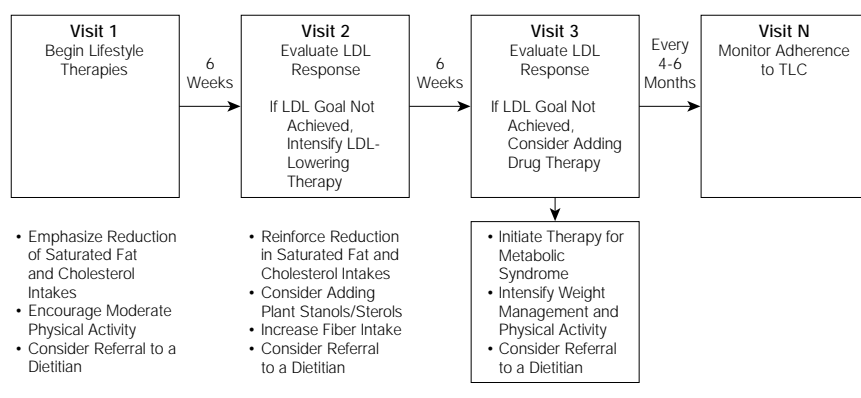
nated goal for LDL cholesterol (see Table 5). When drugs are prescribed, attention to TLC should always be maintained and reinforced. Currently available drugs that affect lipoprotein metabolism and their major characteristics are listed in TABLE 7.

Some cholesterol-lowering agents are currently available over-the-counter (OTC) (eg, nicotinic acid), and manufacturers of several classes of LDL-lowering drugs (eg, statins, bile acid sequestrants) have applied to the Food and Drug Administration (FDA) to allow these agents to become OTC medications. At the time of publication of ATP III, the FDA has not granted permission for OTC status for statins or bile acid sequestrants. If an OTC cholesterol-lowering drug is or becomes available, patients should continue to consult with their physicians about whether to initiate drug treatment, about setting the goals of therapy, and about monitoring for therapeutic responses and side effects.

Secondary Prevention: Drug Therapy for CHD and CHD Risk Equivalents

For persons with CHD and CHD risk equivalents, the goal is to attain an LDL cholesterol level of <100 mg/dL. The cutpoints for initiating lifestyle and drug

Figure 1. Model of Steps in Therapeutic Lifestyle Changes (TLC)



LDL indicates low-density lipoprotein.

Table 7. Drugs Affecting Lipoprotein Metabolism*

Drug Class, Agents, and Daily Doses	Lipid/Lipoprotein Effects	Side Effects	Contraindications	Clinical Trial Results
HMG-CoA reductase inhibitors (statins) [†]	LDL ↓ 18%-55% HDL ↑ 5%-15% TG ↓ 7%-30%	Myopathy; increased liver enzymes	Absolute: active or chronic liver disease Relative: concomitant use of certain drugs [§]	Reduced major coronary events, CHD deaths, need for coronary procedures, stroke, and total mortality
Bile acid sequestrants [‡]	LDL ↓ 15%-30% HDL ↑ 3%-5% TG No change or increase	Gastrointestinal distress; constipation; decreased absorption of other drugs	Absolute: dysbetalipoproteinemia; TG >400 mg/dL Relative: TG >200 mg/dL	Reduced major coronary events and CHD deaths
Nicotinic acid	LDL ↓ 5%-25% HDL ↑ 15%-35% TG ↓ 20%-50%	Flushing; hyperglycemia; hyperuricemia (or gout); upper gastrointestinal distress; hepatotoxicity	Absolute: chronic liver disease; severe gout Relative: diabetes; hyperuricemia; peptic ulcer disease	Reduced major coronary events, and possibly total mortality
Fibric acids [¶]	LDL ↓ 5%-20% (may be increased in patients with high TG) HDL ↑ 10%-20% TG ↓ 20%-50%	Dyspepsia; gallstones; myopathy; unexplained non-CHD deaths in WHO study	Absolute: severe renal disease; severe hepatic disease	Reduced major coronary events

*HMG-CoA indicates 3-hydroxy-3-methylglutaryl coenzyme A; LDL, low-density lipoprotein; HDL, high-density lipoprotein; TG, triglycerides; ↓, decrease; ↑, increase; and CHD, coronary heart disease.

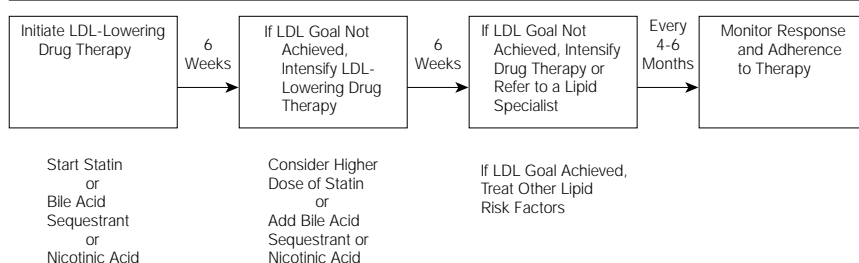
[†]Lovastatin (20-80 mg), pravastatin (20-40 mg), simvastatin (20-80 mg), fluvastatin (20-80 mg), atorvastatin (10-80 mg), and cerivastatin (0.4-0.8 mg).

[‡]Cholestyramine (4-16 g), colestipol (5-20 g), and colesevelam (2.6-3.8 g).

[§]Cyclosporine, macrolide antibiotics, various antifungal agents, and cytochrome P-450 inhibitors (fibrates and niacin should be used with appropriate caution).

^{||}Immediate-release (crystalline) nicotinic acid (1.5-3 g), extended-release nicotinic acid (1-2 g), and sustained-release nicotinic acid (1-2 g).

[¶]Gemfibrozil (600 mg twice daily), fenofibrate (200 mg), and clofibrate (1000 mg twice daily).

Figure 2. Progression of Drug Therapy in Primary Prevention

LDL indicates low-density lipoprotein.

therapies are shown in Table 5. Most patients with CHD will need LDL-lowering drug therapy. Other lipid risk factors may also warrant consideration of drug treatment. Whether or not lipid-modifying drugs are used, non-lipid risk factors require attention and favorable modification.

In patients admitted to the hospital for a major coronary event, LDL cholesterol should be measured on admission or within 24 hours. This value can be used for treatment decisions. In general, persons hospitalized for a coronary event or procedure should be discharged on drug therapy if the LDL cholesterol is ≥ 130 mg/dL. If the LDL is 100-129 mg/dL, clinical judgment should be used in deciding whether to initiate drug treatment at discharge, recognizing that LDL cholesterol levels begin to decline in the first few hours after an event and are significantly decreased by 24 to 48 hours and may remain low for many weeks. Thus, the initial LDL cholesterol level obtained in the hospital may be substantially lower than is usual for the patient. Some authorities hold that drug therapy should be initiated whenever a patient hospitalized for a CHD-related illness is found to have an LDL cholesterol >100 mg/dL. Initiation of drug therapy at the time of hospital discharge has 2 advantages. First, at that time patients are particularly motivated to undertake and adhere to risk-lowering interventions; and second, failure to initiate indicated therapy early is one of the causes of a large "treatment gap," because outpatient follow-up is often less consistent and more fragmented.

LDL-Lowering Drug Therapy for Primary Prevention

Table 5 shows the cutpoints for considering drug treatment in primary prevention. The general approach to management of drug therapy for primary prevention is outlined in FIGURE 2.

When drug therapy for primary prevention is a consideration, the third visit of dietary therapy (see Figure 1) will typically be the visit to initiate drug treatment. Even if drug treatment is started, TLC should be continued. As with TLC, the first priority of drug therapy is to achieve the goal for LDL cholesterol. For this reason, an LDL-lowering drug should be started. The usual drug will be a statin, but alternatives are a bile acid sequestrant or nicotinic acid. In most cases, the statin should be started at a moderate dose. In many patients, the LDL cholesterol goal will be achieved, and higher doses will not be necessary. The patient's response should be evaluated about 6 weeks after starting drug therapy. If the goal of therapy has been achieved, the current dose can be maintained. However, if the goal has not been achieved, LDL-lowering therapy can be intensified, either by increasing the dose of statin or by combining a statin with a bile acid sequestrant or nicotinic acid.

After 12 weeks of drug therapy, the response to therapy should again be assessed. If the LDL cholesterol goal is still not achieved, consideration can be given to further intensification of drug therapy. If the LDL goal cannot be attained by standard lipid-lowering therapy, consideration should be given to seeking consultation from a lipid spe-

cialist. Once the goal for LDL cholesterol has been attained, attention can turn to other lipid risk factors and non-lipid factors. Thereafter, patients can be monitored for response to therapy every 4 to 6 months, or more often if considered necessary.

BENEFIT BEYOND LDL LOWERING: THE METABOLIC SYNDROME AS A SECONDARY TARGET OF THERAPY

Evidence is accumulating that risk for CHD can be reduced beyond LDL-lowering therapy by modification of other risk factors. One potential secondary target of therapy is the metabolic syndrome, which represents a constellation of lipid and nonlipid risk factors of metabolic origin. This syndrome is closely linked to a generalized metabolic disorder called *insulin resistance* in which the normal actions of insulin are impaired. Excess body fat (particularly abdominal obesity) and physical inactivity promote the development of insulin resistance, but some individuals also are genetically predisposed to insulin resistance.

The risk factors of the metabolic syndrome are highly concordant; in aggregate they enhance risk for CHD at any given LDL cholesterol level. For purposes of ATP III, the diagnosis of the metabolic syndrome is made when 3 or more of the risk determinants shown in TABLE 8 are present. These determinants include a combination of categorical and borderline risk factors that can be readily measured in clinical practice.

Management of the metabolic syndrome has a 2-fold objective: (1) to reduce underlying causes (ie, obesity and physical inactivity) and (2) to treat associated nonlipid and lipid risk factors.

Management of Underlying Causes of the Metabolic Syndrome

First-line therapies for all lipid and non-lipid risk factors associated with the metabolic syndrome are weight reduction and increased physical activity,

which will effectively reduce all of these risk factors. Therefore, after appropriate control of LDL cholesterol, TLC should stress weight reduction and physical activity if the metabolic syndrome is present.

Weight Control. In ATP III overweight and obesity are recognized as major, underlying risk factors for CHD and identified as direct targets of intervention. Weight reduction will enhance LDL lowering and reduce all of the risk factors of the metabolic syndrome. The recommended approaches for reducing overweight and obesity are contained in the clinical guidelines of the Obesity Education Initiative.

Physical Activity. Physical inactivity is likewise a major, underlying risk factor for CHD. It augments the lipid and nonlipid risk factors of the metabolic syndrome. It further may enhance risk by impairing cardiovascular fitness and coronary blood flow. Regular physical activity reduces very low-density lipoprotein (VLDL) levels, raises HDL cholesterol, and in some persons, lowers LDL levels. It also can lower blood pressure, reduce insulin resistance, and favorably influence cardiovascular function. Thus, ATP III recommends that regular physical activity become a routine component in management of high serum cholesterol. The evidence base for this recommendation is contained in the US Surgeon General's Report on Physical Activity.

Specific Treatment of Lipid and Nonlipid Risk Factors

Beyond the underlying risk factors, therapies directed against the lipid and nonlipid risk factors of the metabolic syndrome will reduce CHD risk. These include treatment of hypertension, use of aspirin in patients with CHD to reduce the prothrombotic state (guidelines for aspirin use in primary prevention have not been firmly established), and treatment of elevated triglycerides and low HDL cholesterol as discussed below under "Management of Specific Dyslipidemias."

SPECIAL ISSUES Management of Specific Dyslipidemias

Very High LDL Cholesterol (≥ 190 mg/dL). Persons with very high LDL cholesterol usually have genetic forms of hypercholesterolemia: monogenic familial hypercholesterolemia, familial defective apolipoprotein B, and polygenic hypercholesterolemia. Early detection of these disorders through cholesterol testing in young adults is needed to prevent premature CHD. Family testing is important to identify similarly affected relatives. These disorders often require combined drug therapy (statin + bile acid sequestrant) to achieve the goals of LDL-lowering therapy.

Elevated Serum Triglycerides. Recent meta-analyses of prospective studies indicate that elevated triglycerides are also an independent risk factor for CHD. Factors contributing to elevated (higher than normal) triglycerides in the general population include obesity and overweight, physical inactivity, cigarette smoking, excess alcohol intake, high-carbohydrate diets (>60% of energy intake), several diseases (eg, type 2 diabetes, chronic renal failure, nephrotic syndrome), certain drugs (eg, corticosteroids, estrogens, retinoids, higher doses of β -adrenergic blocking agents), and genetic disorders (familial combined hyperlipidemia, familial hypertriglyceridemia, and familial dysbetalipoproteinemia).

In clinical practice, elevated serum triglycerides are most often observed in persons with the metabolic syndrome, although secondary or genetic factors can heighten triglyceride levels. ATP III adopts the following classification of serum triglycerides:

- Normal triglycerides: <150 mg/dL
- Borderline-high triglycerides: 150-199 mg/dL
- High triglycerides: 200-499 mg/dL
- Very high triglycerides: ≥ 500 mg/dL

(To convert triglyceride values to mmol/L, divide by 88.6.)

The finding that elevated triglycerides are an independent CHD risk factor suggests that some triglyceride-rich lipoproteins are atherogenic. The latter are par-

tially degraded VLDL, commonly called *remnant lipoproteins*. In clinical practice, VLDL cholesterol is the most readily available measure of atherogenic remnant lipoproteins. Thus, VLDL cholesterol can be a target of cholesterol-lowering therapy. ATP III identifies the sum of LDL + VLDL cholesterol (termed *non-HDL cholesterol* [total cholesterol - HDL cholesterol]) as a secondary target of therapy in persons with high triglycerides (≥ 200 mg/dL). The goal for non-HDL cholesterol in persons with high serum triglycerides can be set at 30 mg/dL higher than that for LDL cholesterol (TABLE 9) on the premise that a VLDL cholesterol level ≤ 30 mg/dL is normal.

The treatment strategy for elevated triglycerides depends on the causes of the elevation and its severity. For all persons

Table 8. Clinical Identification of the Metabolic Syndrome

Risk Factor	Defining Level
• Abdominal obesity* (waist circumference)†	
Men	>102 cm (>40 in)
Women	>88 cm (>35 in)
• Triglycerides	≥ 150 mg/dL
• High-density lipoprotein cholesterol	
Men	<40 mg/dL
Women	<50 mg/dL
• Blood pressure	$\geq 130/\geq 85$ mm Hg
• Fasting glucose	≥ 110 mg/dL

*Overweight and obesity are associated with insulin resistance and the metabolic syndrome. However, the presence of abdominal obesity is more highly correlated with the metabolic risk factors than is an elevated body mass index (BMI). Therefore, the simple measure of waist circumference is recommended to identify the body weight component of the metabolic syndrome.

†Some male patients can develop multiple metabolic risk factors when the waist circumference is only marginally increased, eg, 94-102 cm (37-40 in). Such patients may have strong genetic contribution to insulin resistance and they should benefit from changes in life habits, similarly to men with categorical increases in waist circumference.

Table 9. Comparison of LDL Cholesterol and Non-HDL Cholesterol Goals for 3 Risk Categories*

Risk Category	LDL Goal (mg/dL)	Non-HDL Goal (mg/dL)
CHD and CHD risk equivalent (10-year risk for CHD >20%)	<100	<130
Multiple (2+) risk factors and 10-year risk $\leq 20\%$	<130	<160
0-1 Risk factor	<160	<190

*LDL indicates low-density lipoprotein; HDL, high-density lipoprotein; and CHD, coronary heart disease.

with borderline high or high triglycerides, the primary aim of therapy is to achieve the target goal for LDL cholesterol. When triglycerides are borderline high (150-199 mg/dL), emphasis should also be placed on weight reduction and increased physical activity. For high triglycerides (200-499 mg/dL), non-HDL cholesterol becomes a secondary target of therapy. Aside from weight reduction and increased physical activity, drug therapy can be considered in high-risk persons to achieve the non-HDL cholesterol goal. There are 2 approaches to drug therapy. First, the non-HDL cholesterol goal can be achieved by intensifying therapy with an LDL-lowering drug; second, nicotinic acid or fibrate can be added, if used with appropriate caution, to achieve the non-HDL cholesterol goal by further lowering VLDL cholesterol. In rare cases in which triglycerides are very high (≥ 500 mg/dL), the initial aim of therapy is to prevent acute pancreatitis through triglyceride lowering. This approach requires very low-fat diets ($\leq 15\%$ of calorie intake), weight reduction, increased physical activity, and usually a triglyceride-lowering drug (fibrate or nicotinic acid). Only after triglyceride levels have been lowered to < 500 mg/dL should attention turn to LDL lowering to reduce risk for CHD.

Low HDL Cholesterol. Low HDL cholesterol is a strong independent predictor of CHD. In ATP III, low HDL cholesterol is defined categorically as a level < 40 mg/dL, a change from the level of < 35 mg/dL in ATP II. In the present guidelines, low HDL cholesterol both modifies the goal for LDL-lowering therapy and is used as a risk factor to estimate 10-year risk for CHD.

Low HDL cholesterol levels have several causes, many of which are associated with insulin resistance, ie, elevated triglycerides, overweight and obesity, physical inactivity, and type 2 diabetes. Other causes are cigarette smoking, very high carbohydrate intakes ($> 60\%$ of calories), and certain drugs (eg, β -blockers, anabolic steroids, progestational agents).

ATP III does not specify a goal for HDL raising. Although clinical trial results sug-

gest that raising HDL will reduce risk, the evidence is insufficient to specify a goal of therapy. Furthermore, currently available drugs do not robustly raise HDL cholesterol. Nonetheless, a low HDL should receive clinical attention and management according to the following sequence. In all persons with low HDL cholesterol, the primary target of therapy is LDL cholesterol; ATP III guidelines should be followed to achieve the LDL cholesterol goal. Second, after the LDL goal has been reached, emphasis shifts to weight reduction and increased physical activity (when the metabolic syndrome is present). When a low HDL cholesterol is associated with high triglycerides (200-499 mg/dL), secondary priority goes to achieving the non-HDL cholesterol goal, as outlined earlier. Also, if triglycerides are < 200 mg/dL (isolated low HDL cholesterol), drugs for HDL raising (fibrates or nicotinic acid) can be considered; however, treatment for isolated low HDL is mostly reserved for persons with CHD and CHD risk equivalents.

Diabetic Dyslipidemia. This disorder is essentially atherogenic dyslipidemia in persons with type 2 diabetes. Although elevated triglycerides, low HDL cholesterol, or both are common in persons with diabetes, clinical trial results support the identification of LDL cholesterol as the primary target of therapy, as it is in those without diabetes. Since diabetes is designated a CHD risk equivalent in ATP III, the LDL cholesterol goal of therapy for most persons with diabetes will be < 100 mg/dL. Furthermore, when LDL cholesterol is ≥ 130 mg/dL, most persons with diabetes will require initiation of LDL-lowering drugs simultaneously with TLC to achieve the LDL goal. When LDL cholesterol levels are in the range of 100-129 mg/dL at baseline or on treatment, several therapeutic options are available: increasing intensity of LDL-lowering therapy, adding a drug to modify atherogenic dyslipidemia (fibrate or nicotinic acid), or intensifying control of other risk factors including hyperglycemia. When triglyceride levels are ≥ 200 mg/dL, non-HDL cholesterol becomes a secondary target of cholesterol-

lowering therapy. Several ongoing clinical trials (eg, Antihypertensive and Lipid Lowering Heart Attack Trial [ALLHAT]) will better quantify the magnitude of the benefit of LDL-lowering treatment in older individuals with diabetes. In older persons (≥ 65 years) with diabetes but no additional CHD risk factors other than age, clinical judgment is required for how intensively to apply these guidelines. A variety of factors, including concomitant illnesses, general health status, and social issues, may influence treatment decisions and may suggest a more conservative approach.

Special Considerations for Different Population Groups

Middle-Aged Men (35-65 Years). In general, men have a higher risk for CHD than do women. Middle-aged men in particular have a high prevalence of the major risk factors and are predisposed to abdominal obesity and the metabolic syndrome. A sizable fraction of all CHD in men occurs in middle age. Thus, many middle-aged men carry a relatively high risk for CHD, and for those who do, intensive LDL-lowering therapy is needed.

Women Aged 45-75 Years. In women, onset of CHD generally is delayed by some 10 to 15 years compared with that in men; thus, most CHD in women occurs after age 65 years. All risk factors contribute to CHD in women, and most premature CHD in women (< 65 years) occurs in those with multiple risk factors and the metabolic syndrome. Despite the previous belief that the sex difference in risk for CHD reflects a protective effect of estrogen in women, recent secondary and primary prevention trials cast doubt on the use of hormone replacement therapy to reduce CHD risk in postmenopausal women. In contrast, the favorable effects of statin therapy in women in clinical trials make a cholesterol-lowering drug preferable to hormone replacement therapy for CHD risk reduction. Women should be treated similarly to men for secondary prevention. For primary prevention, ATP III's general approach is similarly applicable for women and men. However, the later on-

Table 10. Interventions to Improve Adherence

Focus on the Patient
<ul style="list-style-type: none"> • Simplify medication regimens • Provide explicit patient instruction and use good counseling techniques to teach the patient how to follow the prescribed treatment • Encourage the use of prompts to help patients remember treatment regimens • Use systems to reinforce adherence and maintain contact with the patient • Encourage the support of family and friends • Reinforce and reward adherence • Increase visits for patients unable to achieve treatment goal • Increase the convenience and access to care • Involve patients in their care through self-monitoring
Focus on the Physician and Medical Office
<ul style="list-style-type: none"> • Teach physicians to implement lipid treatment guidelines • Use reminders to prompt physicians to attend to lipid management • Identify a patient advocate in the office to help deliver or prompt care • Use patients to prompt preventive care • Develop a standardized treatment plan to structure care • Use feedback from past performance to foster change in future care • Remind patients of appointments and follow up missed appointments
Focus on the Health Delivery System
<ul style="list-style-type: none"> • Provide lipid management through a lipid clinic • Utilize case management by nurses • Deploy telemedicine • Utilize the collaborative care of pharmacists • Execute critical care pathways in hospitals

set of CHD for women in general should be factored into clinical decisions about use of cholesterol-lowering drugs.

Older Adults (Men ≥65 Years and Women ≥75 Years). Overall, most new CHD events and most coronary deaths occur in older persons (≥65 years). A high level of LDL cholesterol and low HDL cholesterol still carry predictive power for the development of CHD in older persons. Nevertheless, the finding of advanced subclinical atherosclerosis by noninvasive testing can be helpful for confirming the presence of high risk in older persons. Secondary prevention trials with statins have included a sizable number of older persons, mostly in the age range of 65 to 75 years. In these trials, older persons showed significant risk reduction with statin therapy. Thus, no hard-and-fast age restrictions appear necessary when selecting persons with established CHD for LDL-lowering therapy. For pri-

mary prevention, TLC is the first line of therapy for older persons. However, LDL-lowering drugs can also be considered when older persons are at higher risk because of multiple risk factors or advanced subclinical atherosclerosis.

Younger Adults (Men 20-35 Years; Women 20-45 Years). In this age group, CHD is rare except in those with severe risk factors, eg, familial hypercholesterolemia, heavy cigarette smoking, or diabetes. Even though clinical CHD is relatively rare in young adults, coronary atherosclerosis in its early stages may progress rapidly. The rate of development of coronary atherosclerosis earlier in life correlates with the major risk factors. In particular, long-term prospective studies reveal that elevated serum cholesterol detected in young adulthood predicts a higher rate of premature CHD in middle age. Thus, risk factor identification in young adults is an important aim for long-term prevention. The combination of early detection and early intervention on elevated LDL cholesterol with life-habit changes offers the opportunity for delaying or preventing onset of CHD later in life. For young adults with LDL cholesterol levels of ≥130 mg/dL, TLC should be instituted and emphasized. Particular attention should be given to young men who smoke and have a high LDL cholesterol (160-189 mg/dL); they may be candidates for LDL-lowering drugs. When young adults have very high LDL cholesterol levels (≥190 mg/dL), drug therapy should be considered, as in other adults. Those with severe genetic forms of hypercholesterolemia may require LDL-lowering drugs in combination (eg, statin + bile acid sequestrant).

Racial and Ethnic Groups. African Americans have the highest overall CHD mortality rate and the highest out-of-hospital coronary death rates of any ethnic group in the United States, particularly at younger ages. Although the reasons for the excess CHD mortality among African Americans have not been fully elucidated, it can be accounted for, at least in part, by the high prevalence of coronary risk factors. Hy-

per-tension, left ventricular hypertrophy, diabetes mellitus, cigarette smoking, obesity, physical inactivity, and multiple CHD risk factors all occur more frequently in African Americans than in whites. Other ethnic groups and minority populations in the United States include Hispanics, Native Americans, Asian and Pacific Islanders, and South Asians. Although limited data suggest that racial and ethnic groups vary somewhat in baseline risk for CHD, this evidence did not appear sufficient to lead the ATP III panel to modify general recommendations for cholesterol management in these populations.

ADHERENCE TO LDL-LOWERING THERAPY

Adherence to the ATP III guidelines by both patients and providers is a key to approximating the magnitude of the benefits demonstrated in clinical trials of cholesterol lowering. Adherence issues have to be addressed to attain the highest possible levels of CHD risk reduction. Thus, ATP III recommends the use of state-of-the-art multidisciplinary methods targeting the patient, clinicians, and health delivery systems to achieve the full population effectiveness of the guidelines for primary and secondary prevention (TABLE 10).

National Cholesterol Education Program Expert Panel on Detection, Evaluation, and Treatment of High Blood Cholesterol in Adults (Adult Treatment Panel III)

Members: Scott M. Grundy, MD, PhD (Chair of the panel), Diane Becker, RN, MPH, ScD, Luther T. Clark, MD, Richard S. Cooper, MD, Margo A. Denke, MD, Wm. James Howard, MD, Donald B. Hunnigake, MD, D. Roger Illingworth, MD, PhD, Russell V. Luepker, MD, MS, Patrick McBride, MD, MPH, James M. McKenney, PharmD, Richard C. Pasternak, MD, Neil J. Stone, MD, Linda Van Horn, PhD, RD

Ex-officio Members: H. Bryan Brewer, Jr, MD, James I. Cleeman, MD (Executive Director of the panel), Nancy D. Ernst, PhD, RD, David Gordon, MD, PhD, Daniel Levy, MD, Basil Rifkind, MD, Jacques E. Rossouw, MD, Peter Savage, MD

Consultants: Steven M. Haffner, MD, David G. Orloff, MD, Michael A. Proschan, PhD, J. Sanford Schwartz, MD, Christopher T. Sempos, PhD
Staff: Susan T. Shero, RN, MS, Elaine Z. Murray

Financial Disclosure: Dr Grundy has received honoraria from Merck, Pfizer, Sankyo, Bayer, and Bristol-Myers Squibb. Dr Hunninghake has current grants from Merck, Pfizer, Kos Pharmaceuticals, Schering Plough, Wyeth Ayerst, Sankyo, Bayer, AstraZeneca, Bristol-Myers Squibb, and G. D. Searle; he has also received consulting honoraria from Merck, Pfizer, Kos Pharmaceuticals, Sankyo, AstraZeneca, and Bayer. Dr McBride has received grants and/or research support from Pfizer, Merck, Parke-Davis, and AstraZeneca; has served as a consultant for Kos Pharmaceuticals, Abbott, and Merck; and has received honoraria from Abbott, Bristol-Myers Squibb, Novartis, Merck, Kos Pharmaceuticals, Parke-Davis, Pfizer, and DuPont. Dr Pasternak has served as a consultant for and received honoraria from Merck, Pfizer, and Kos Pharmaceuticals, and has received grants from Merck and Pfizer. Dr Stone has served as a consultant and/or received honoraria for lectures from Abbott, Bayer, Bristol-Myers Squibb, Kos Pharmaceuticals, Merck, Novartis, Parke-Davis/Pfizer, and Sankyo. Dr Schwartz has served as a consultant for and/or conducted research funded by Bristol-Myers Squibb, AstraZeneca, Merck, Johnson & Johnson-Merck, and Pfizer.

Executive Committee Liaison to the Panel: Stephen Havas, MD, MPH, MS

Reviewers of the Full Report of ATP III: Eugene Braunwald, MD, W. Virgil Brown, MD, Alan Chait, MD, James E. Dalen, MD, Valentin Fuster, MD, PhD, Henry N. Ginsberg, MD, Antonio M. Gotto, MD, DPhil, Ronald M. Krauss, MD, John C. LaRosa, MD, Thomas H. Lee, Jr, MD, Linda Meyers, PhD, Michael Newman, MD, Thomas Pearson, MD, PhD, Daniel J. Rader, MD, Frank M. Sacks, MD, Ernst J. Schaefer, MD, Sheldon G. Sheps, MD, Lynn A. Smaha, MD, PhD, Sidney C. Smith, Jr, MD, Jeremiah Stamler, MD, Daniel Steinberg, MD, PhD, Nanette K. Wenger, MD

National Cholesterol Education Program Coordinating Committee: The Third Report of the Expert Panel on Detection, Evaluation, and Treatment of High Blood Cholesterol in Adults was approved by the National Cholesterol Education Program Coordinating Committee, which comprises the following organizational representatives:

Member Organizations: *National Heart, Lung, and Blood Institute:* Claude Lenfant, MD (Chair), James I. Cleeman, MD (Coordinator); *American Academy of Family Physicians:* Theodore G. Ganiats, MD; *American Academy of Insurance Medicine:* Gary Graham, MD; *American Academy of Pediatrics:* Ronald E. Kleinman, MD; *American Association of Occupational Health Nurses:* Pamela Hixon, BSN, RN, COHN-S; *American College of Cardiology:* Richard C. Pasternak, MD; *American College of Chest Physicians:* Gerald T. Gau, MD; *American College of Nutrition:* Harry Preuss, MD; *American College of Obstetricians and Gynecologists:* Thomas C. Peng, MD; *American College of Occupational and Environmental Medicine:* Ruth Ann Jordan, MD; *American College of Preventive Medicine:* Lewis H. Kuller, MD, DrPH; *American Diabetes Association, Inc:* Alan J. Garber, MD, PhD; *American Dietetic Association:* Linda Van Horn, PhD, RD; *American Heart Association:* Scott M. Grundy, MD, PhD; *American Hospital Association:* Sandra Cornett, RN, PhD; *American Medical Association:* Yank D. Coble, Jr, MD; *American Nurses Association:* to be named; *American Osteopathic Association:* Michael Clearfield, DO; *American Pharmaceutical Association:* James M. McKenney, PharmD; *American Public Health Association:* Stephen Havas, MD, MPH, MS; *American Red Cross:* Donald Vardell, MS; *Association of Black Cardiologists:* Karol Watson, MD, PhD; *Association of State and Territorial Health Officials:* Joanne Mitten, MHE; *Citizens for Public Action on Blood Pressure and Cholesterol, Inc:* Gerald J. Wilson, MA, MBA; *National Black Nurses Association, Inc:* Linda Burnes-Bolton, DrPH, RN, MSN; *National Medical Association:* Luther T. Clark, MD; *Society for Nutrition Education:* Darlene Lansing, MPH, RD; *Society for Public Health Education:* Donald O. Fedder, DrPH, MPH.

Associate Member Organization: *American Association of Office Nurses:* Joyce Logan.

Federal Agencies: *NHLBI Ad Hoc Committee on Minority Populations:* Yvonne L. Bronner, ScD, RD, LD; *Agency for Healthcare Research and Quality:* Francis D. Chesley, Jr, MD; *Centers for Disease Control and Prevention:* Wayne Giles, MD, MPH; *Coordinating Committee for the Community Demonstration Studies:* Thomas M. Lasater, PhD; *Department of Agriculture:* Alanna Moshfegh, MS, RD; *Department of Defense:* Col Robert Dana Bradshaw, MD, MPH; *Food and Drug Administration:* Elizabeth Yetley, PhD; *Health Resources and Services Administration:* Celia Hayes, MPH, RD; *National Cancer Institute:* Carolyn Clifford, PhD; *National Center for Health Statistics:* Clifford Johnson, MPH; *Office of Disease Prevention and Health Promotion:* Elizabeth Castro, PhD; *Department of Veterans Affairs:* Pamela Steele, MD.

APPENDIX

Shared Features of ATP III and ATP II

Adult Treatment Panel (ATP) III shares a set of core features with ATP II, shown in Table A.

Table A. Shared Features of ATP III and ATP II*

- Continued identification of LDL cholesterol lowering as the primary goal of therapy
- Consideration of high LDL cholesterol (≥ 160 mg/dL) as a potential target for LDL-lowering drug therapy, specifically as follows:
 - For persons with multiple risk factors whose LDL levels are high (≥ 160 mg/dL) after dietary therapy, consideration of drug therapy is recommended
 - For persons with 0-1 risk factor, consideration of drug therapy (after dietary therapy) is optional for LDL 160-189 mg/dL and recommended for LDL ≥ 190 mg/dL
- Emphasis on intensive LDL-lowering therapy in persons with established CHD
- Identification of 3 categories of risk for different LDL goals and different intensities of LDL-lowering therapy:
 - CHD and CHD risk equivalents† (other forms of clinical atherosclerotic disease)
 - Multiple (2+) risk factors‡
 - 0-1 risk factor
- Identification of subpopulations, besides middle-aged men, for detection of high LDL cholesterol (and other lipid risk factors) and for clinical intervention. These include:
 - Young adults
 - Postmenopausal women
 - Older persons
- Emphasis on weight loss and physical activity to enhance risk reduction in persons with elevated LDL cholesterol

*ATP indicates Adult Treatment Panel; LDL, low-density lipoprotein; and CHD, coronary heart disease.

†A CHD risk equivalent is a condition that carries an absolute risk for developing new CHD equal to the risk for having recurrent CHD events in persons with established CHD.

‡Risk factors that continue to modify the LDL goal include cigarette smoking, hypertension, low HDL cholesterol, family history of premature CHD, age (male ≥ 45 years and female ≥ 55 years), and diabetes (in ATP III diabetes is regarded as a CHD risk equivalent).

Estimating 10-Year Risk for Men and Women

Risk assessment for determining the 10-year risk for developing CHD is carried out using Framingham risk scoring (Table B1 for men and Table B2 for women). The risk factors included in the Framingham calculation of 10-year risk are age, total cholesterol, HDL cholesterol, systolic blood pressure, treatment for hypertension, and cigarette smoking. The first step is to calculate the number of points for each risk factor. For initial assessment, values for total cholesterol and HDL cholesterol are required. Because of a larger database, Framingham estimates are more robust for total cholesterol than for LDL cholesterol. Note, however, that the LDL cholesterol level remains the primary target of therapy. Total cholesterol and HDL cholesterol values should be the average of at least 2 measurements obtained from lipoprotein analysis. The blood pressure value used is that obtained at the time of assessment, regardless of whether the person is on antihypertensive therapy. However, if the person is on antihypertensive treatment, an extra point is added beyond points for the blood pressure reading because treated hypertension carries residual risk (Tables B1 and B2). The average of several blood pressure measurements, as recommended by the Joint National Committee (JNC), is needed for an accurate measure of baseline blood pressure. The designation "smoker" means any cigarette smoking in the past month. The total risk score sums the points for each risk factor. The 10-year risk for myocardial infarction and coronary death (hard CHD) is estimated from total points, and the person is categorized according to absolute 10-year risk as indicated above (see Table 5).

Table B1. Estimate of 10-Year Risk for Men (Framingham Point Scores)

Age, y	Points
20-34	-9
35-39	-4
40-44	0
45-49	3
50-54	6
55-59	8
60-64	10
65-69	11
70-74	12
75-79	13

Total Cholesterol, mg/dL	Points				
	Age 20-39 y	Age 40-49 y	Age 50-59 y	Age 60-69 y	Age 70-79 y
<160	0	0	0	0	0
160-199	4	3	2	1	0
200-239	7	5	3	1	0
240-279	9	6	4	2	1
≥280	11	8	5	3	1

	Points				
	Age 20-39 y	Age 40-49 y	Age 50-59 y	Age 60-69 y	Age 70-79 y
Nonsmoker	0	0	0	0	0
Smoker	8	5	3	1	1

HDL, mg/dL	Points
≥60	-1
50-59	0
40-49	1
<40	2

Systolic BP, mm Hg	If Untreated	If Treated
<120	0	0
120-129	0	1
130-139	1	2
140-159	1	2
≥160	2	3

Point Total	10-Year Risk, %
<0	<1
0	1
1	1
2	1
3	1
4	1
5	2
6	2
7	3
8	4
9	5
10	6
11	8
12	10
13	12
14	16
15	20
16	25
≥17	≥30

Table B2. Estimate of 10-Year Risk for Women (Framingham Point Scores)

Age, y	Points
20-34	-7
35-39	-3
40-44	0
45-49	3
50-54	6
55-59	8
60-64	10
65-69	12
70-74	14
75-79	16

Total Cholesterol, mg/dL	Points				
	Age 20-39 y	Age 40-49 y	Age 50-59 y	Age 60-69 y	Age 70-79 y
<160	0	0	0	0	0
160-199	4	3	2	1	1
200-239	8	6	4	2	1
240-279	11	8	5	3	2
≥280	13	10	7	4	2

	Points				
	Age 20-39 y	Age 40-49 y	Age 50-59 y	Age 60-69 y	Age 70-79 y
Nonsmoker	0	0	0	0	0
Smoker	9	7	4	2	1

HDL, mg/dL	Points
≥60	-1
50-59	0
40-49	1
<40	2

Systolic BP, mm Hg	If Untreated	If Treated
<120	0	0
120-129	1	3
130-139	2	4
140-159	3	5
≥160	4	6

Point Total	10-Year Risk, %
<9	<1
9	1
10	1
11	1
12	1
13	2
14	2
15	3
16	4
17	5
18	6
19	8
20	11
21	14
22	17
23	22
24	27
≥25	≥30